



515 Painter Road, Media PA, 19063  
610-566-9134 | [tylerarboretum.org](http://tylerarboretum.org)



General information is available  
at the Visitor Center.

For emergency assistance  
please call 610-566-9134, ext. 212.

**Hours**  
*March – October*

Monday - Friday 9 am – 5 pm  
Saturday - Sunday 9 am – 6 pm

*November – February*

Monday - Friday 9 am – 4 pm  
Saturday - Sunday 9 am – 5 pm

Closed on Thanksgiving Day,  
Christmas Eve, and Christmas Day.



*This map was created in partnership with  
the Delaware Valley Orienteering Association.  
For more information, visit [www.dvoa.org](http://www.dvoa.org).*

*Cover image courtesy of David Charlton.*

## AN ENDURING TRADITION OF STEWARDSHIP

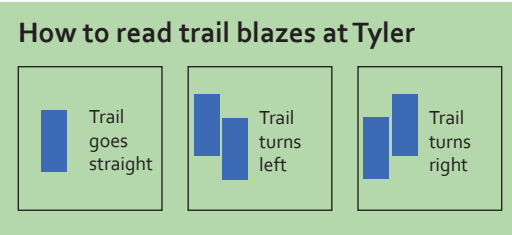
**TYLER ARBORETUM** is one of the oldest and largest arboreta in the northeastern United States. Built on property purchased in 1681 from William Penn by Thomas Minshall, an English Quaker, the property was owned by eight generations of the Minshall, Painter, and Tyler families through 1944. As a prosperous working farm, the 650-acre property once counted four homesteads, three of which can be found as ruins on the trails. The Home Farm forms the historic core of the Arboretum today. In the 1820s, Jacob and Minshall Painter (Thomas Minshall's great, great, great grandsons), planted thousands of trees, some of which survive today and are marked with blue tags. Their collection became known locally as the Painter Arboretum. John J. Tyler (a direct descendant of Thomas Minshall), and his wife, Laura, bequeathed the property to a Board of Trustees established to direct and oversee the land as a public garden. Dr. John Casper Wister, Tyler Arboretum's first director, laid out the extensive trails system and built upon the Painter legacy by creating extensive collections of conifers, magnolias, lilacs, hollies, and rhododendrons.



Today, the trails are managed by our Natural Lands Committee, a volunteer corps dedicated to the stewardship of the 550 acres outside the deer exclusion fence. Tyler's trails wander through stunning landscapes and diverse environments, including a pond and streams, meadows, woodlands, and rare ecosystems, such as the Pink Hill Serpentine Barren. Each trail connects to the Scenic Loop, a 1.2 mile loop through the Pinetum and meadows, and is clearly blazed for easy wayfinding. Several trails interconnect. Feel free to explore. Seventeen miles of trails await your discovery.

### Trail blazes

Each trail is blazed in a color that matches the color of the trail on the map. Trail blazes appear on the trunks of trees as painted vertical rectangles. All trail blazes indicate the direction of travel.



### Safety on the trails

Our trails can be uneven, as well as slippery in wet conditions. Please watch your footing, particularly when crossing streams, dress for the weather, and wear appropriate footwear. In warmer weather, bug spray may be useful. Parents, guardians, and teachers are urged to

keep a close eye on small children while near the ponds and streams. The terrain away from the trails can be steep, rocky, and uneven; for your safety, and to help protect our fragile plants, flowers, and ecosystems, please remain on the trail.

### Follow the map

If you're at the Visitor Center or the Barn, you're in grid reference 2B. If you're at Gate 6, you're in 4C. When you make a turn on a trail, look at your map to orient yourself. Use the symbols on the map to better understand the landscape.

As you walk, you may want to turn the map in the direction you're walking. A good quality compass will help you check your direction.

### Rocky Run Trail (blue blazes)



**Gate 1.** 1.9 miles, approximately 1 hour.  
*A gentle, family-friendly trail ideal for a gentle meander and a chance to watch butterflies and birds.*

A mid-length trail, this family-friendly hike offers charming views through woodland and meadows, with the chance to see lots of seasonal birds and butterflies. Mostly woodland, with a short section of meadow, this path is an easy nature walk for families with young children and all-terrain strollers.

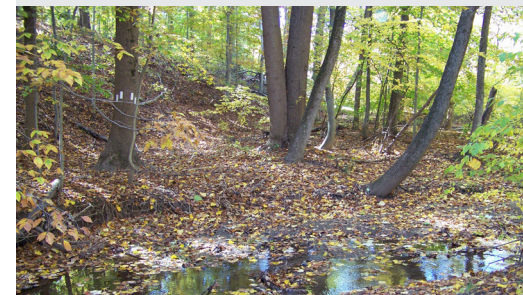
### Painter Trail (red blazes)



**Gate 4.** 2.2 miles, approximately 1 hour, 50 minutes. *Our most challenging trail, featuring stream crossings and great views.*

Named for the brothers who owned this land in the mid-1800s and who planted over one thousands species of trees and shrubs, the Painter Trail is a challenging hike that offers memorable views of the Arboretum and Rocky Run. This trail abounds with seasonal color, passes through woodlands and meadows, and includes two easy stream crossings.

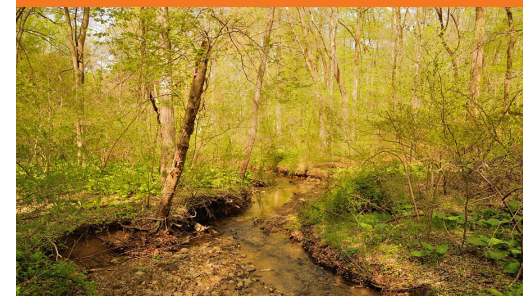
### Minshall Trail (white blazes)



**Gate 2.** 7.4 miles, approximately 4 hours.  
*Our longest and most secluded trail, featuring historic ruins.*

Running through most of our 650 acres, the Minshall trail is a secluded hike featuring diverse ecosystems and historic ruins. Named for the Minshalls who bought this land from William Penn in 1681, this trail crosses Painter and Barren Roads and passes the ruins of the South Farm barn. The purple-blazed connector trail saves 2 miles and an hour's hike.

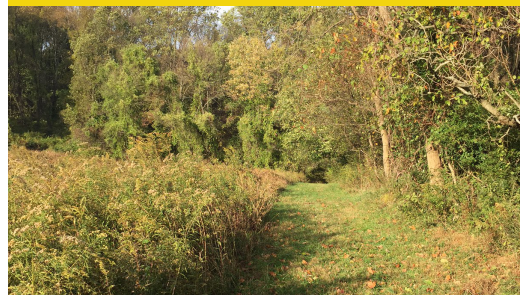
### Dismal Run Trail (orange blazes)



**Gate 6.** 2 miles, approximately 1 hour, 10 minutes. *This trail offers challenging hills and historic ruins*

This trail offers steep hills, historic ruins, and a range of wildlife. Despite its name, Dismal Run is a pristine stream that runs through secluded woodlands. The hills on this trail provide a workout that offers great views across the valley. The trail also passes the intriguing ruins of a small 18th century stone cottage.

### Middle Farm Trail (yellow blazes)



**Gate 3.** 1.4 miles, approximately 45 minutes.  
*Our shortest and most family-friendly trail, offering expansive meadow views.*

Our shortest hike offers family-friendly walking and views of our seasonally flowering meadows. With a gentle hill and a short, simple loop, this trail is ideal for families with young children, while offering several places along the route at which to pause and enjoy a quiet moment of peace and personal serenity.

### Pink Hill Trail (pink blazes)



**Gate 7.** 1.6 miles, approximately 1 hour.  
*Featuring moderate hills, a rare ecosystem, our chestnut orchard, and quiet meadows.*

The Pink Hill trail crosses Painter Road, offers hilltop views, a stream, a quiet meadow, and passes the Chestnut Nursery. Named for the moss phlox that blooms each April, Pink Hill is a serpentine barren: an ecosystem with an underlying bedrock with high levels of toxic nickel, and an imbalance of magnesium and calcium.

**Please note:** *All hiking times and distances are from the trail heads located at the gate in the deer exclusion fence.*

## Trail etiquette

- Please do not climb the trees. Many of our trees are old or have lightning conductors.
- Please leave sticks, nuts, leaves, seeds, mushrooms, insects, bones, birds, bird eggs, skins, reptiles, and feathers, flowers and all plants where you find them.
- Stay on the designated paths and trails.

- Help protect our plants and trees from hungry deer by making sure all gates on to the trails close and latch behind you
- Please dispose of trash in the containers at the Visitor Center, or take your trash home. Trash on the trails is ugly and can be dangerous or lethal to wildlife.

- Thank you for not bringing alcohol into Tyler Arboretum's grounds.
- Pets, other than service animals, are not permitted. Please leave dogs at home.
- Please leave bicycles, motorcycles, horses, and all-terrain vehicles at home.
- Thank you for not smoking while visiting.



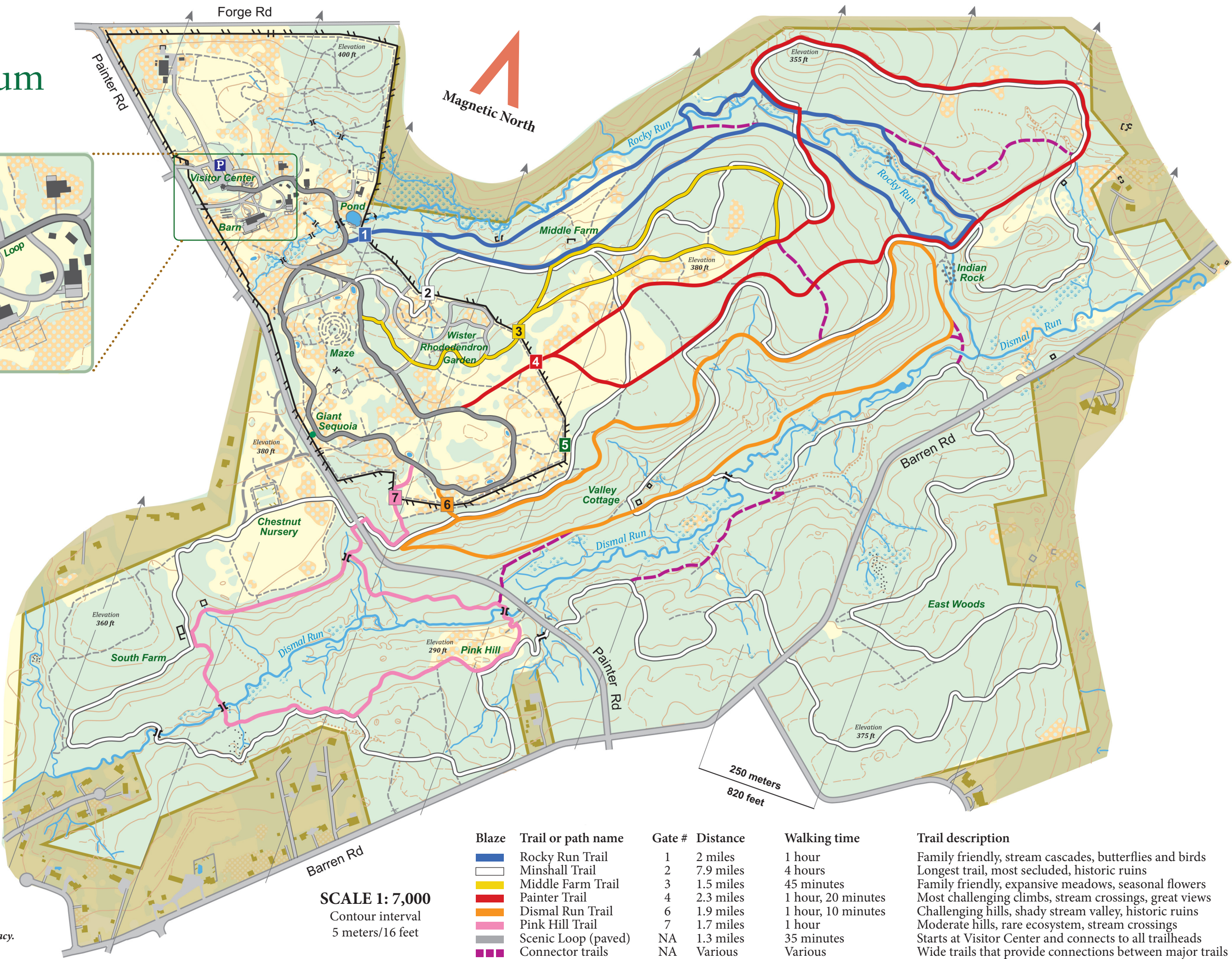
# Tyler Arboretum

Entrance detail



## Map legend

- Trails (non-blazed)
  - Paved paths
  - Fence
  - Deer fence (with gate)
  - Buildings
  - Ruins, footbridge
  - Topographic contours indicate a change in elevation (slope tags point downhill)
  - Woods
  - Meadows and lawn
  - Meadows and scattered trees
  - Streams
  - Seasonal streams
  - Seasonal marsh
  - Ponds
  - Holding ponds
  - Dry ditches
  - Earth walls
  - Stone walls
  - Boulder fields
  - Boulders
  - Property boundary
  - Private property
- Please respect our neighbors' privacy.



SCALE 1: 7,000  
Contour interval  
5 meters/16 feet

Blaze	Trail or path name	Gate #	Distance	Walking time	Trail description
	Rocky Run Trail	1	2 miles	1 hour	Family friendly, stream cascades, butterflies and birds
	Minshall Trail	2	7.9 miles	4 hours	Longest trail, most secluded, historic ruins
	Middle Farm Trail	3	1.5 miles	45 minutes	Family friendly, expansive meadows, seasonal flowers
	Painter Trail	4	2.3 miles	1 hour, 20 minutes	Most challenging climbs, stream crossings, great views
	Dismal Run Trail	6	1.9 miles	1 hour, 10 minutes	Challenging hills, shady stream valley, historic ruins
	Pink Hill Trail	7	1.7 miles	1 hour	Moderate hills, rare ecosystem, stream crossings
	Scenic Loop (paved)	NA	1.3 miles	35 minutes	Starts at Visitor Center and connects to all trailheads
	Connector trails	NA	Various	Various	Wide trails that provide connections between major trails